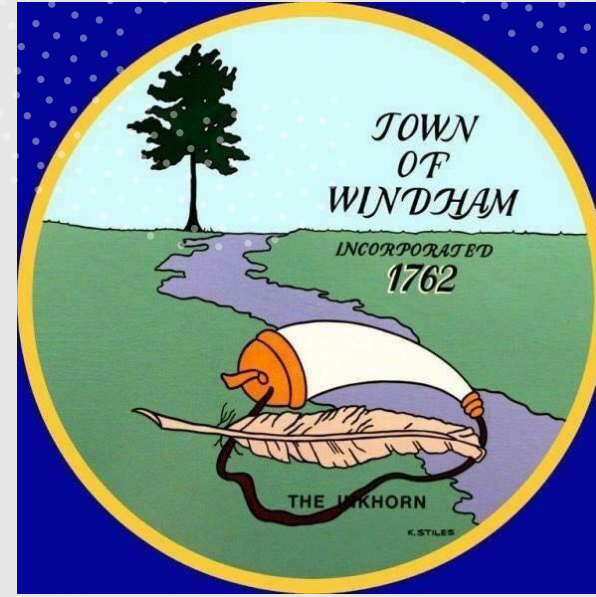


WIN: 26576.00 -
Mountain Division Trail

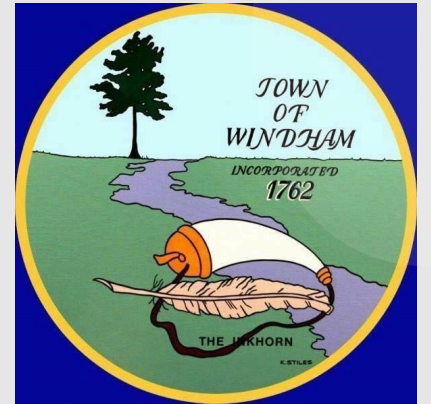
Westbrook & Windham, Maine

Public Meeting #1
May 31, 2023



Introductions

- **Jennie Franceschi** – City of Westbrook,
Director of Planning and Code Enforcement
- **Rebecca Spitella** – City of Westbrook,
Senior Planner
- **Mark Arienti** – Town of Windham,
Town Engineer (Local Project Administrator)
- **Amanda Lessard** – Town of Windham,
Planning Director
- **Gerald Dostie** – Maine DOT,
Project Manager
- **Donald G. Ettinger Jr.** – Gorrill Palmer,
Principal
- **Jared S. Winchenbach** – Gorrill Palmer,
Project Manager

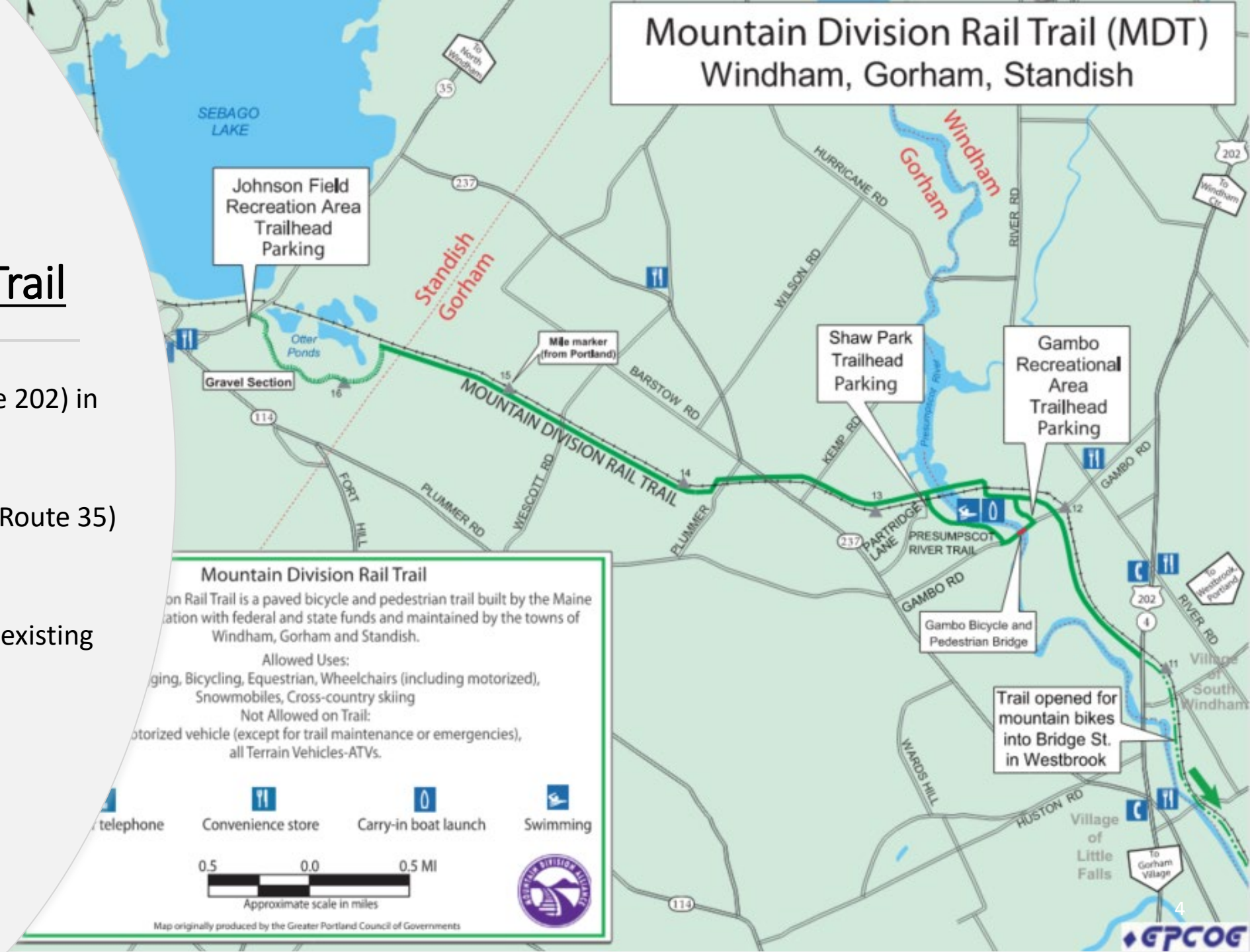




Project History

Big Picture – Mountain Division Trail

- Starts at Main Street (Route 202) in Windham
- Ends at Chadbourne Road (Route 35) in Standish
- Approximately 5.5 miles of existing trail network

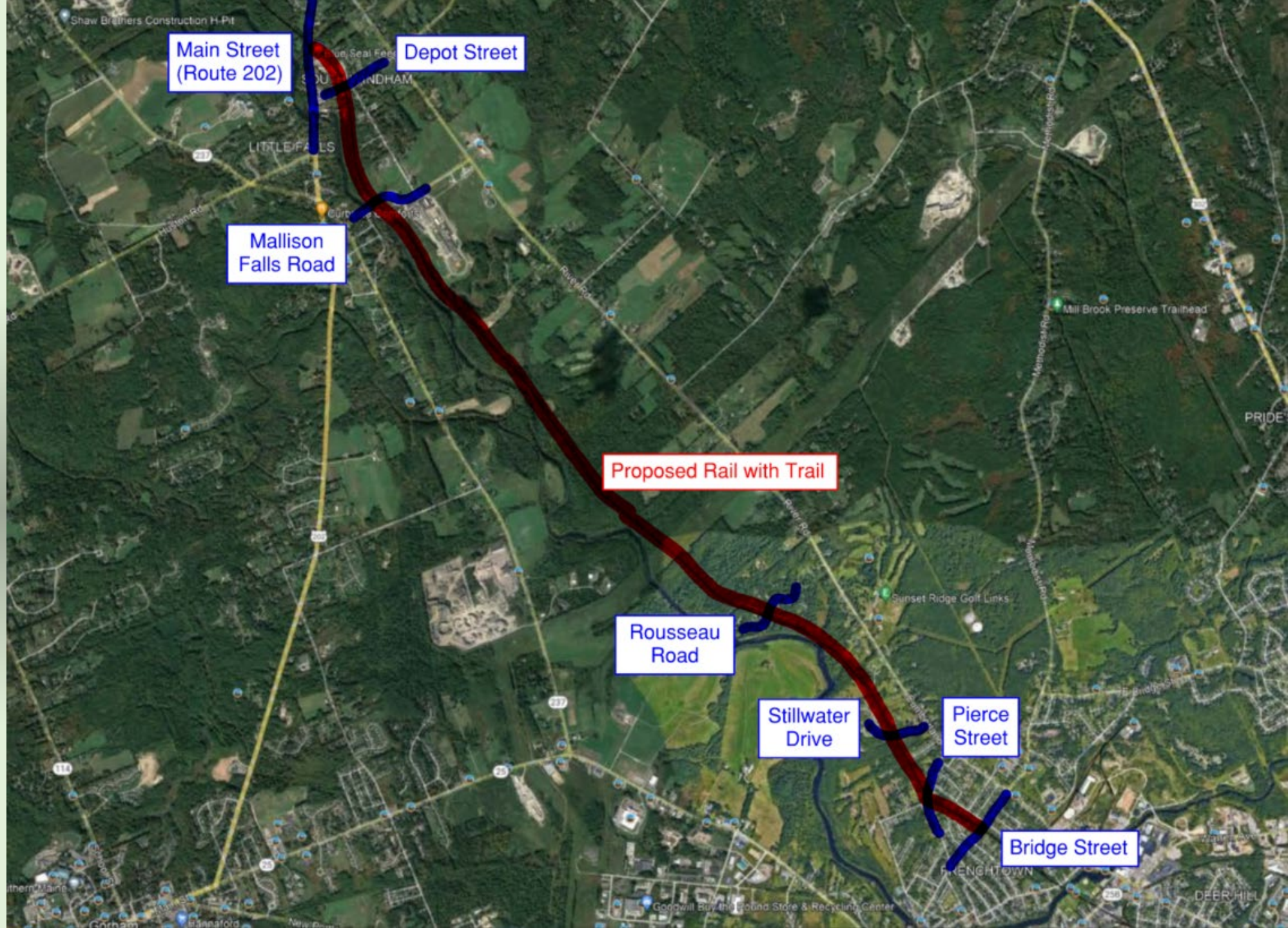


Project Limits

- Starts at Bridge Street in Westbrook
- Ends at Main Street (Route 202) in Windham
- Approximately 5 miles in length

Westbrook: 1.25 miles

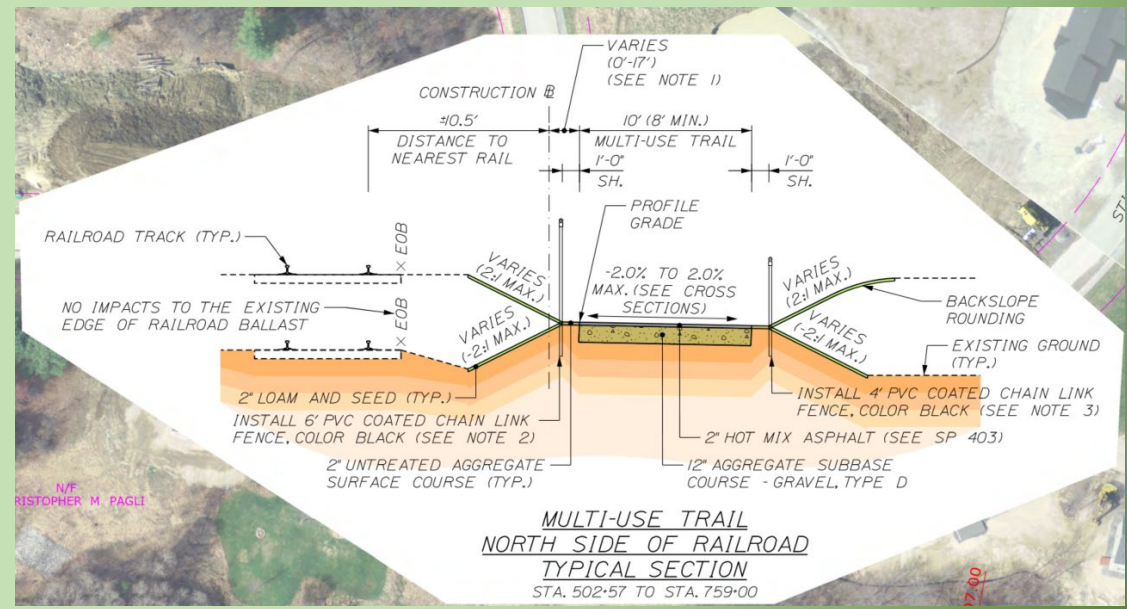
Windham: 3.75 miles



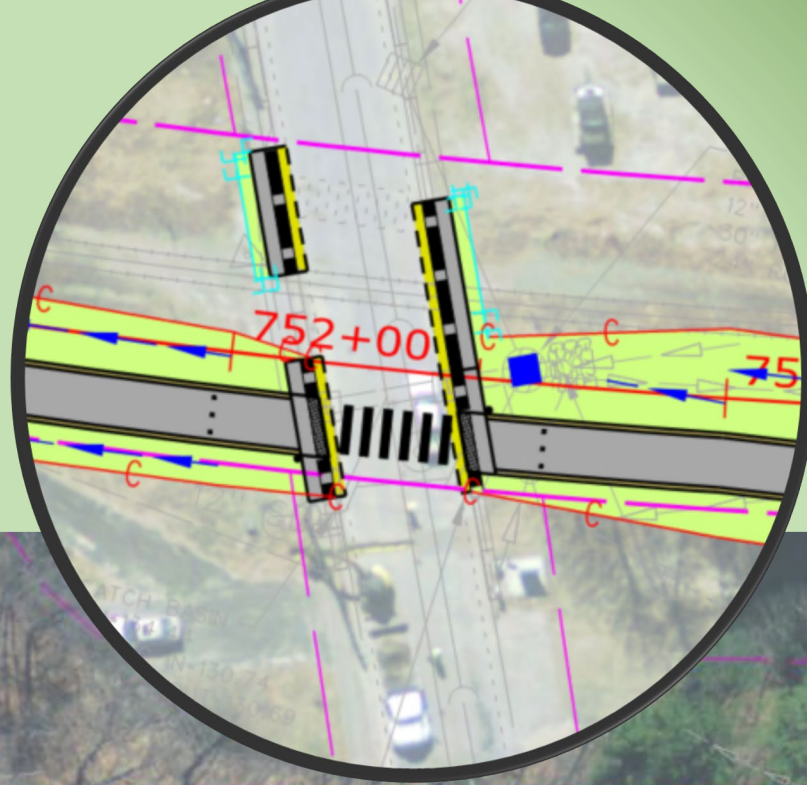


Project Description

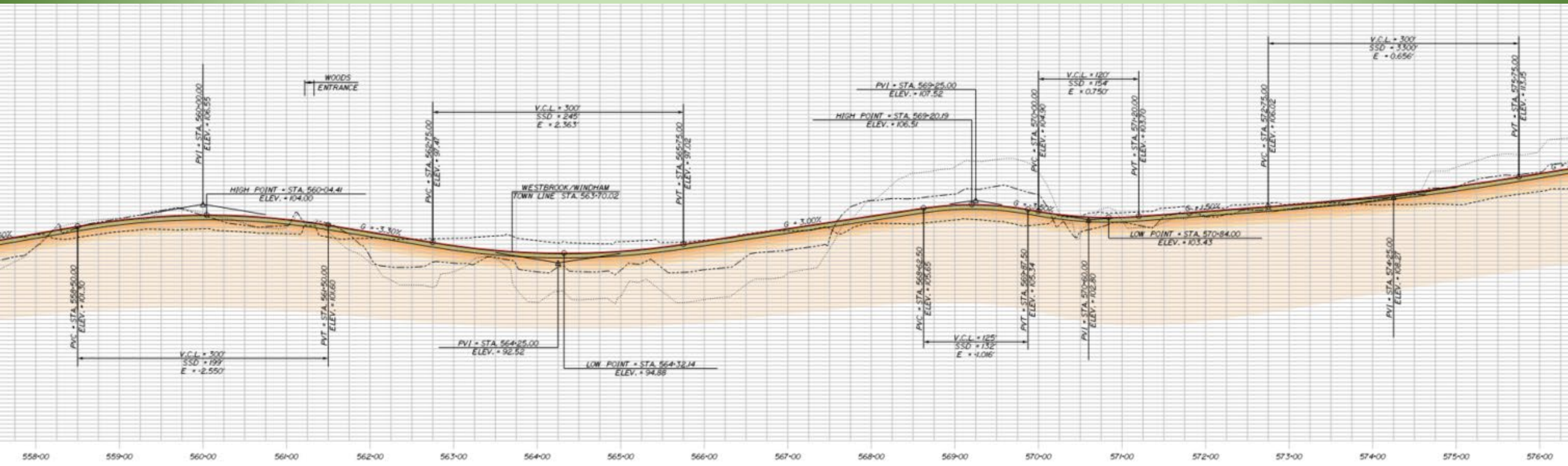
- 10' wide paved trail
- 1' gravel shoulder
- Similar in nature to the existing trail north of Main Street (see photos above)



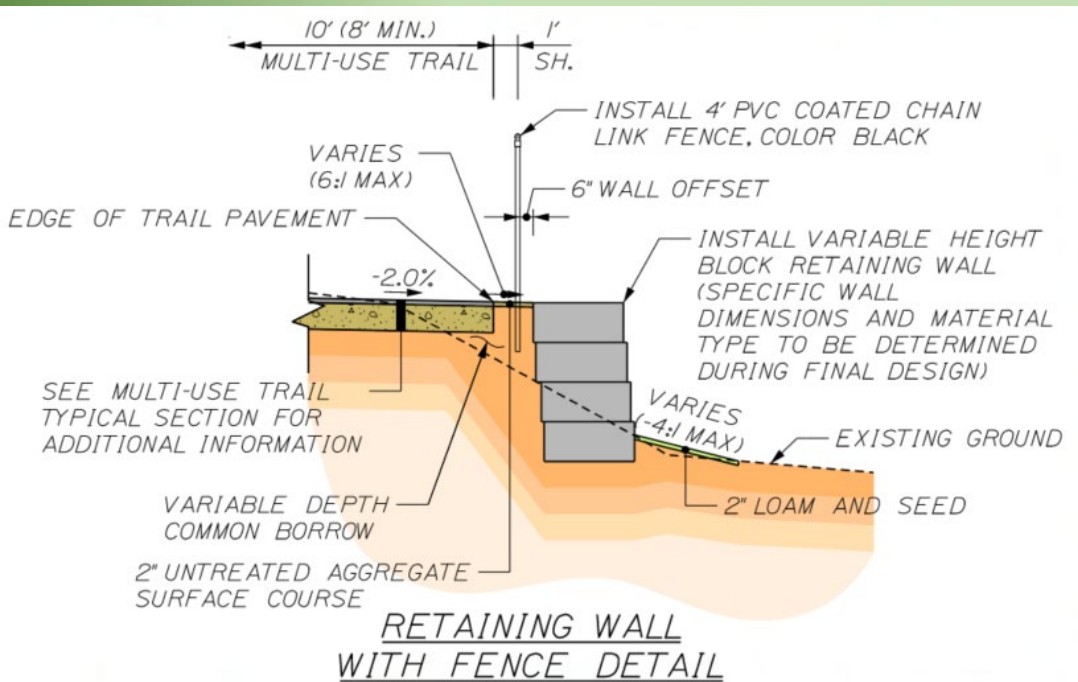
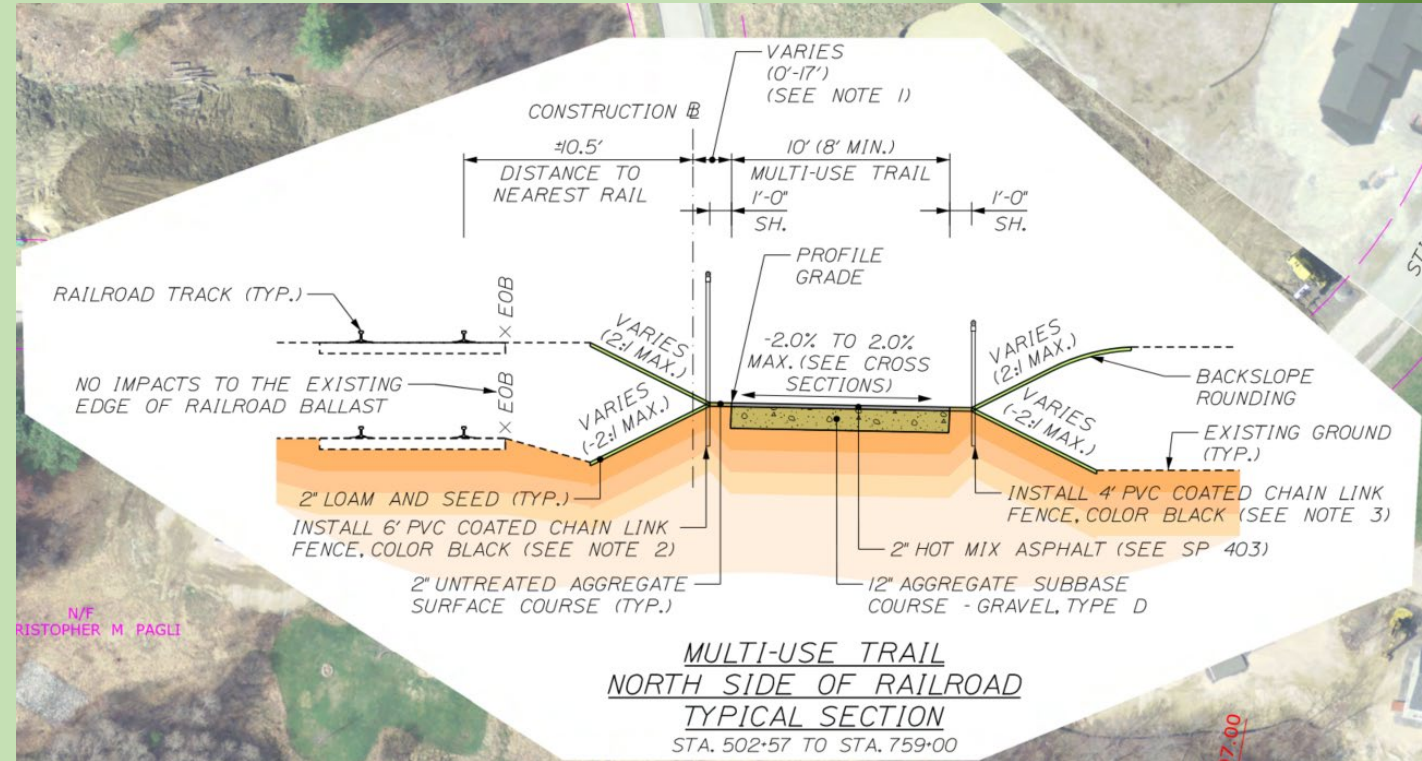
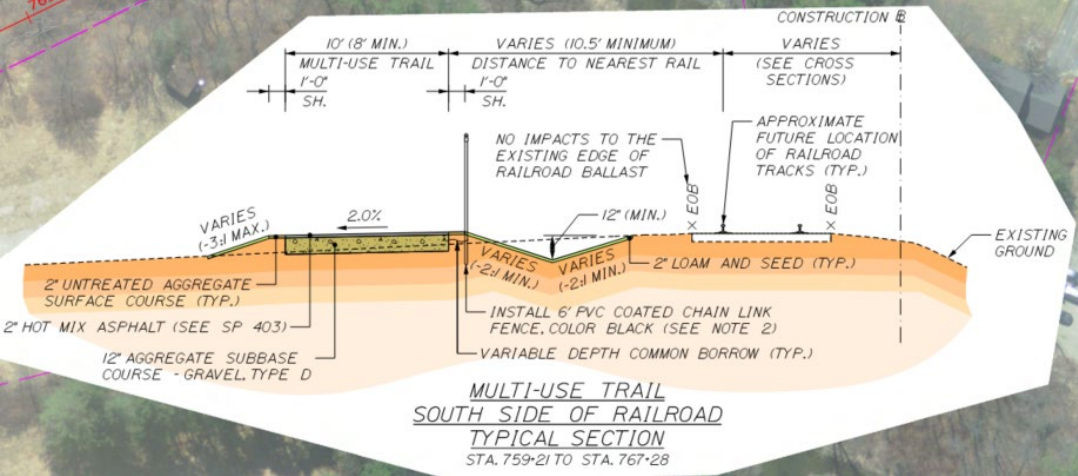
Plan View



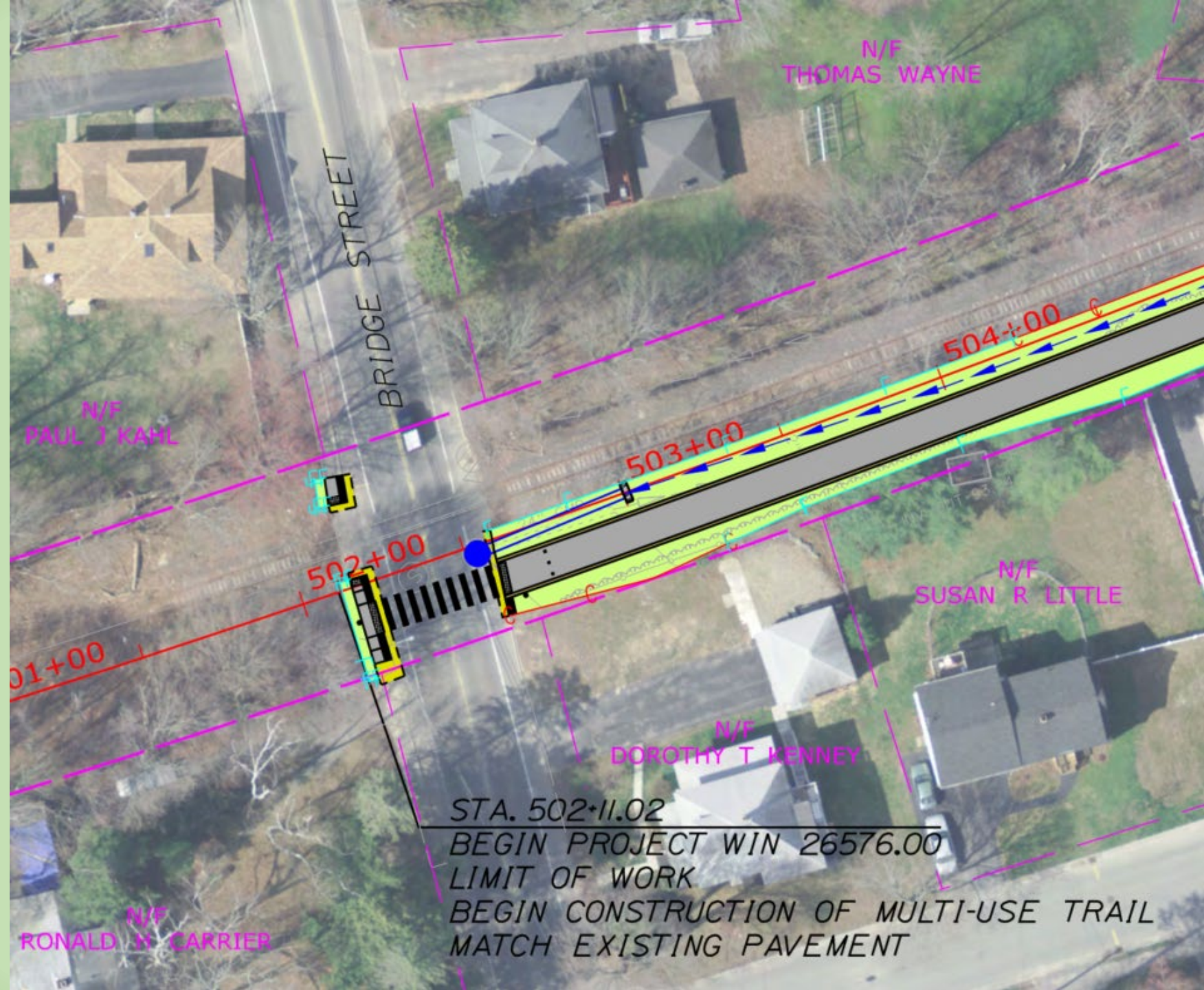
Profile



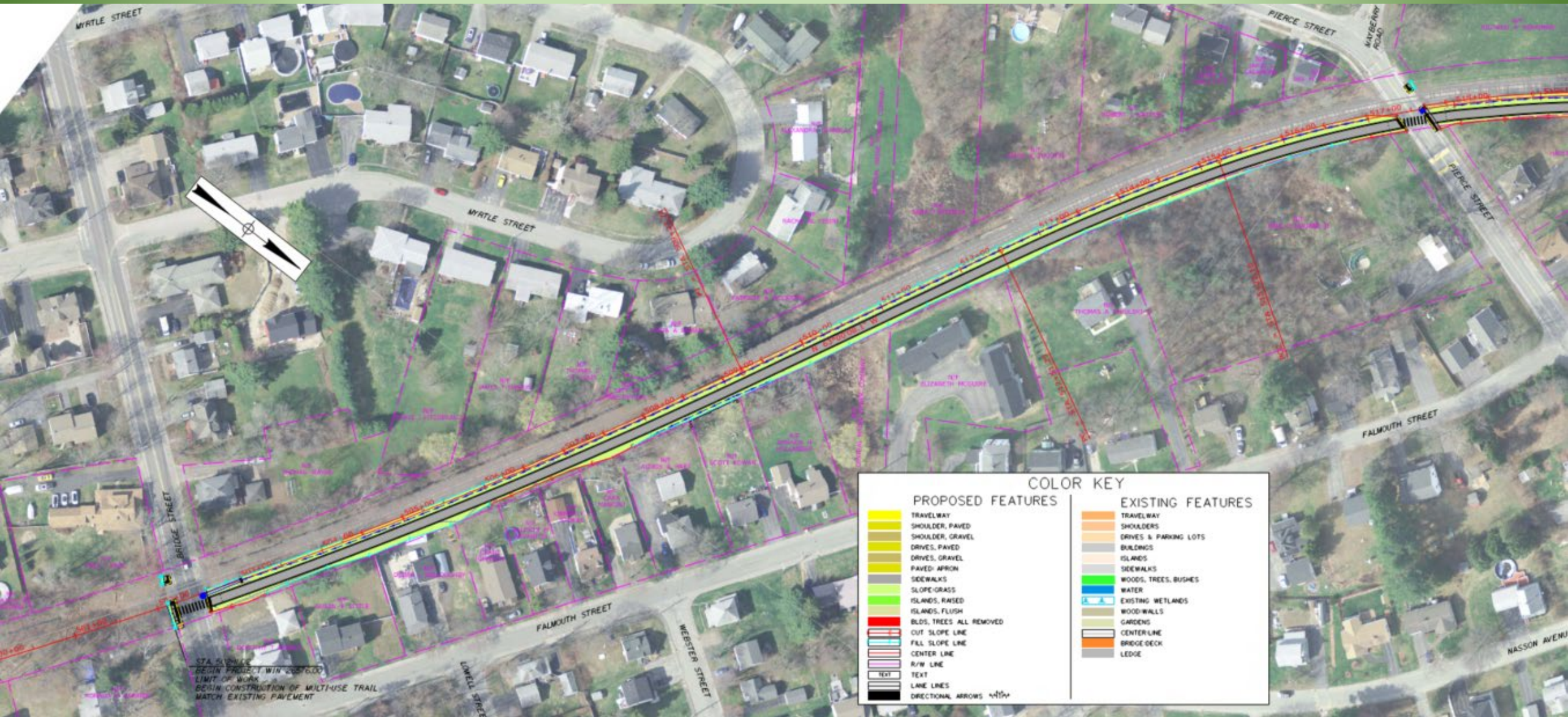
Typical Sections



Bridge Street



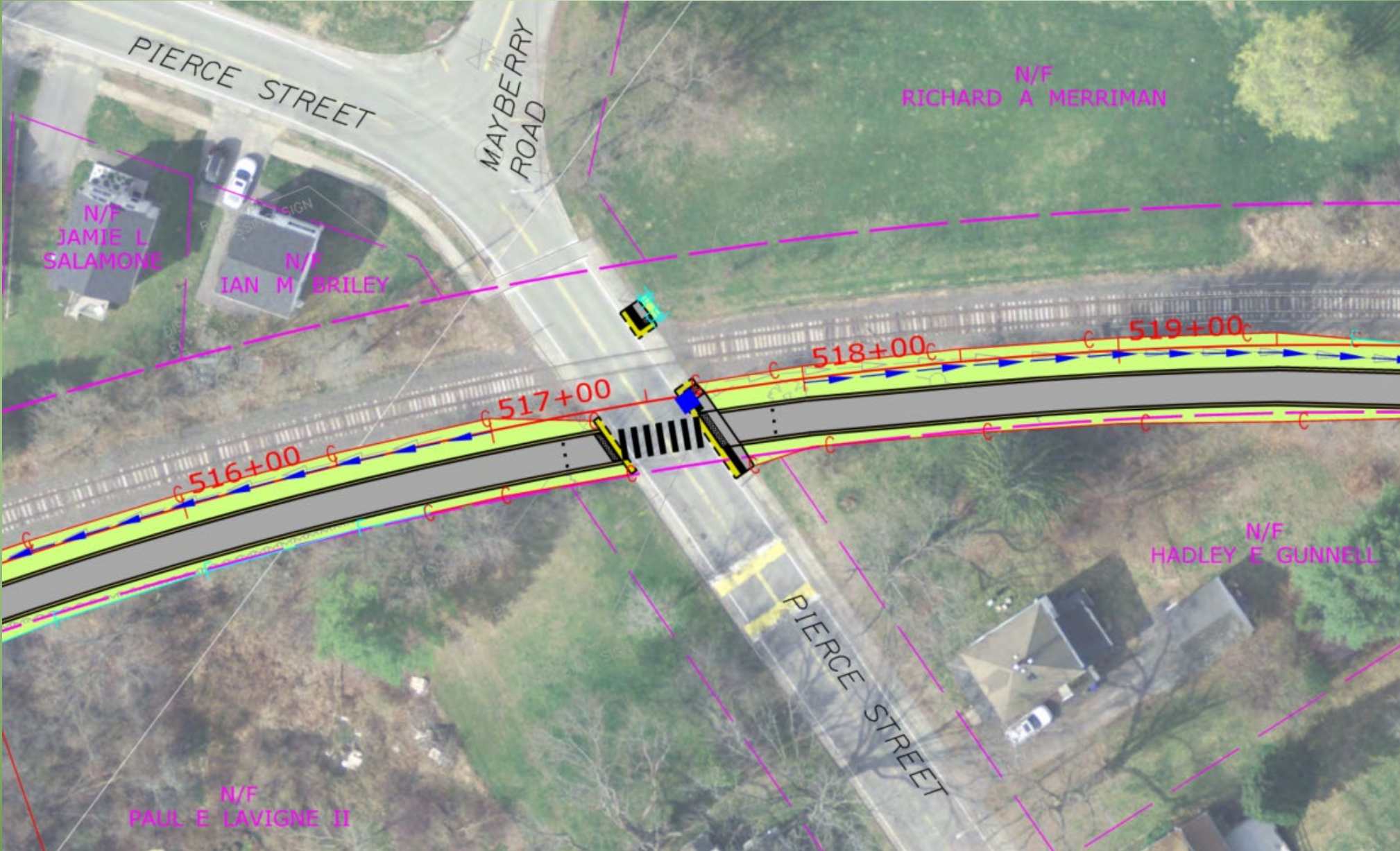
Section 1 – Bridge Street to Pierce Street



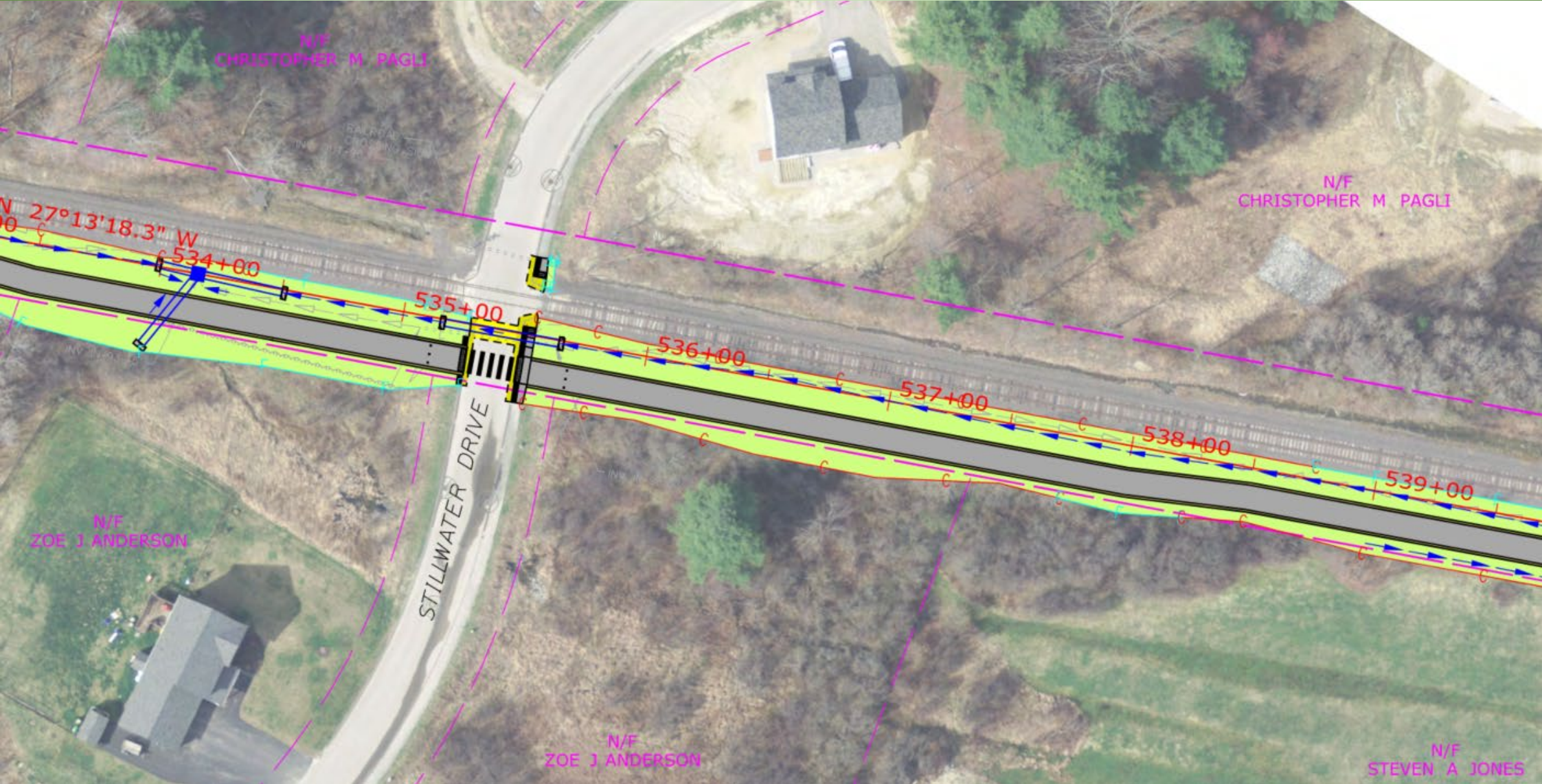
Section 1 – Bridge Street to Pierce Street Profile



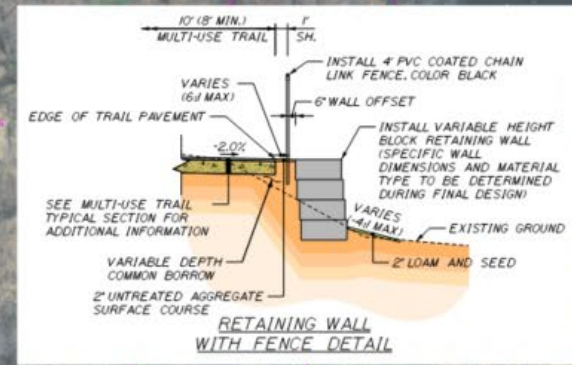
Pierce Street



Stillwater Drive



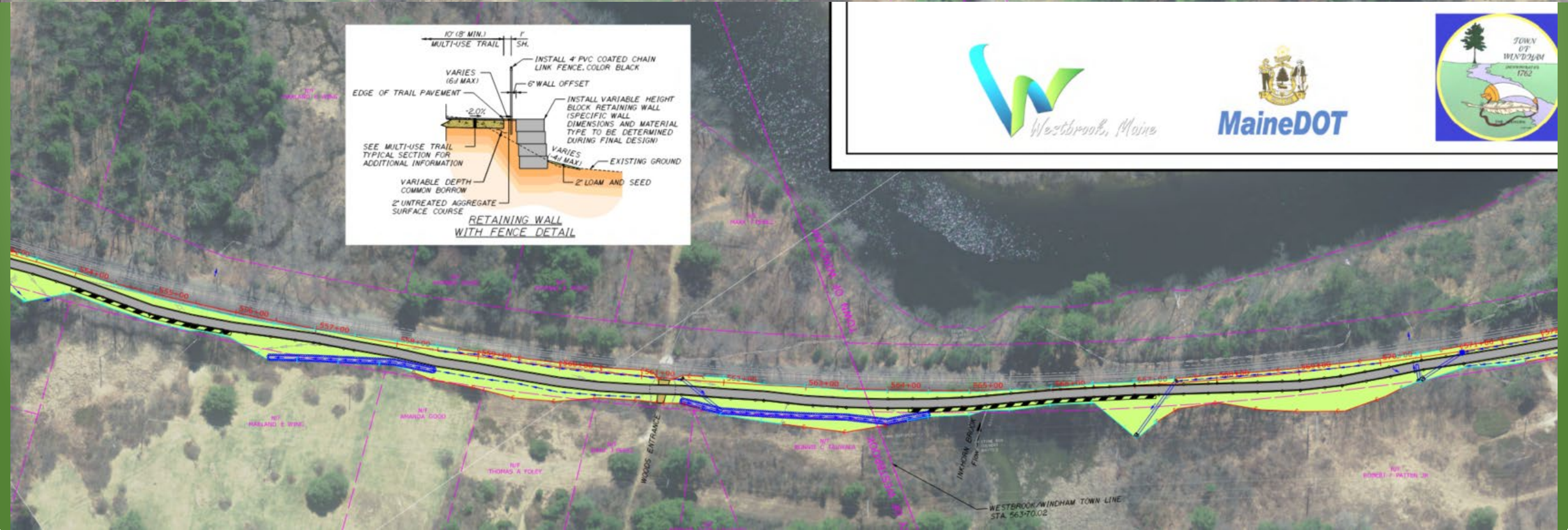
Section 3 – Stillwater Drive to Rousseau Road



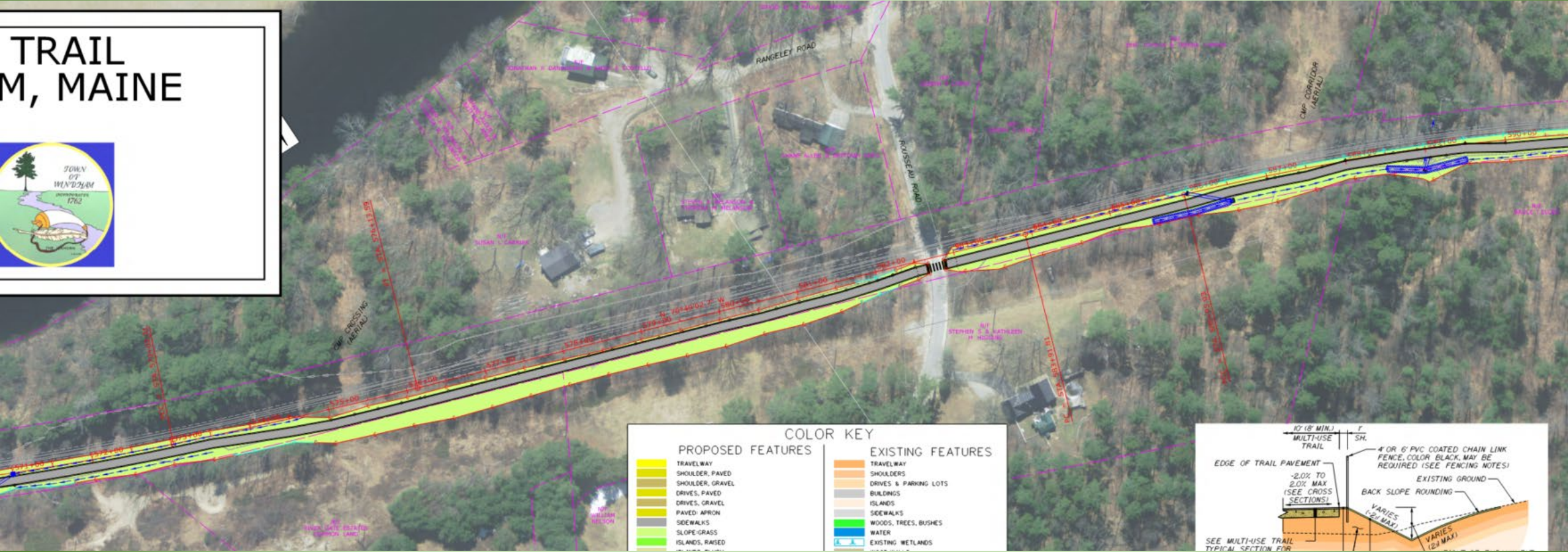
Westbrook, Maine

MaineDOT

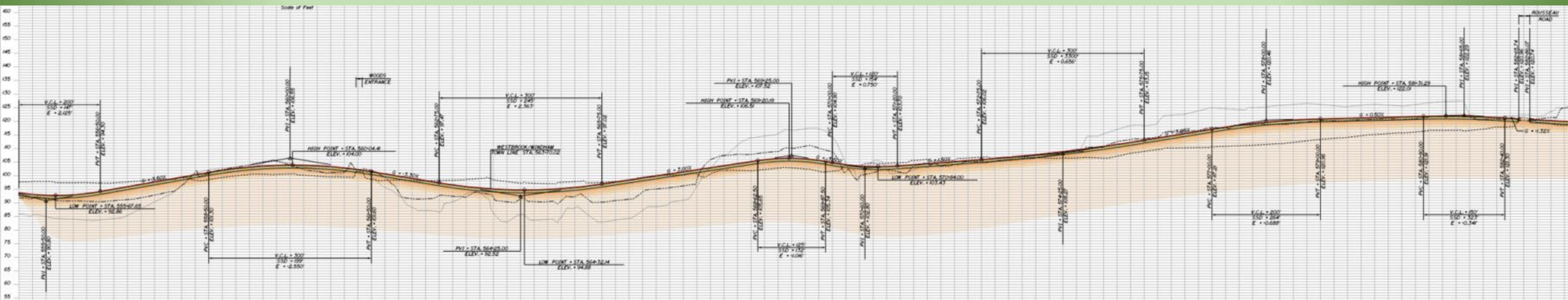
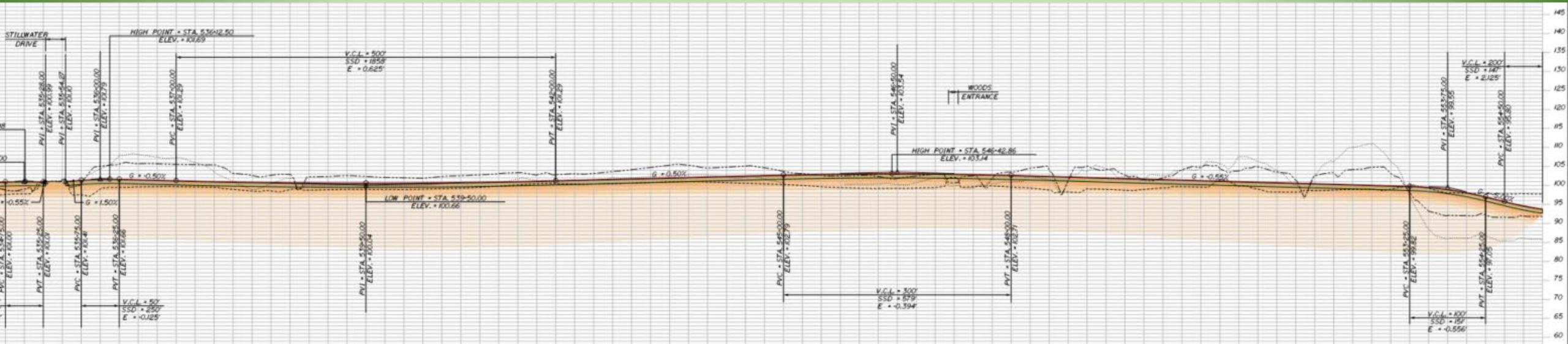
TOWN OF WINDHAM 1762



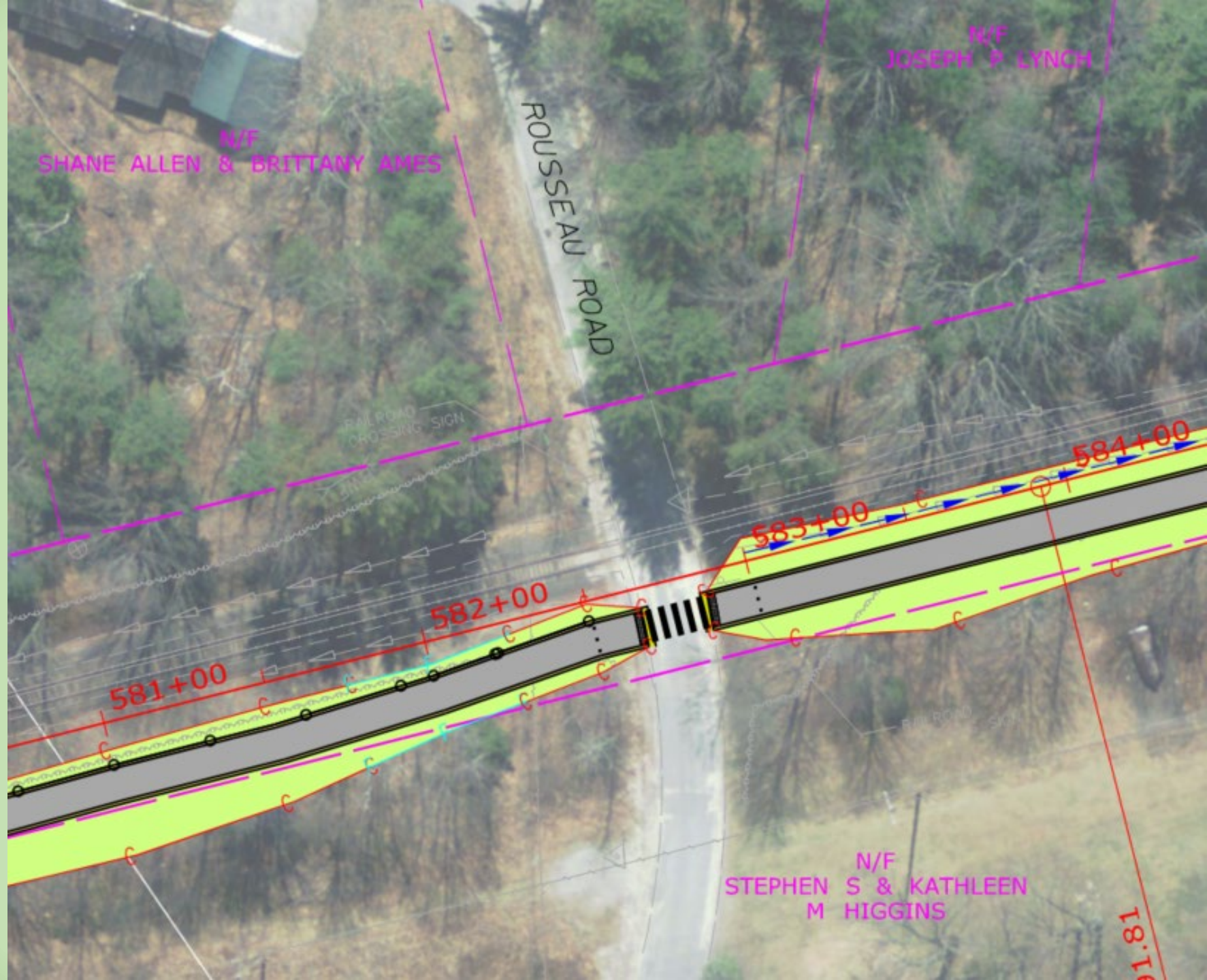
Section 3 – Stillwater Drive to Rousseau Road



Section 3 – Stillwater Drive to Rousseau Road Profile

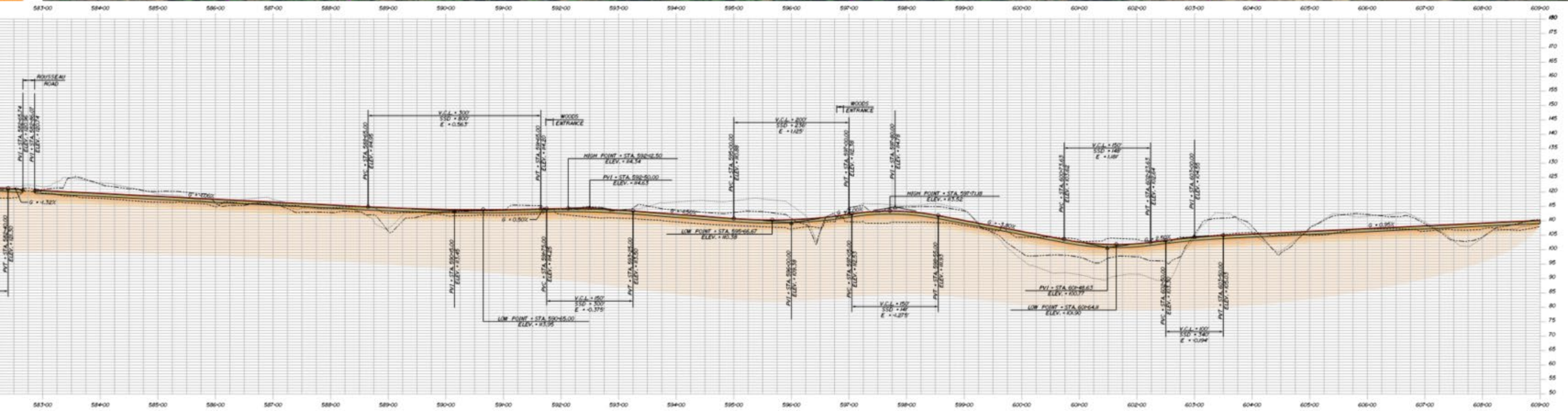


Rousseau Road

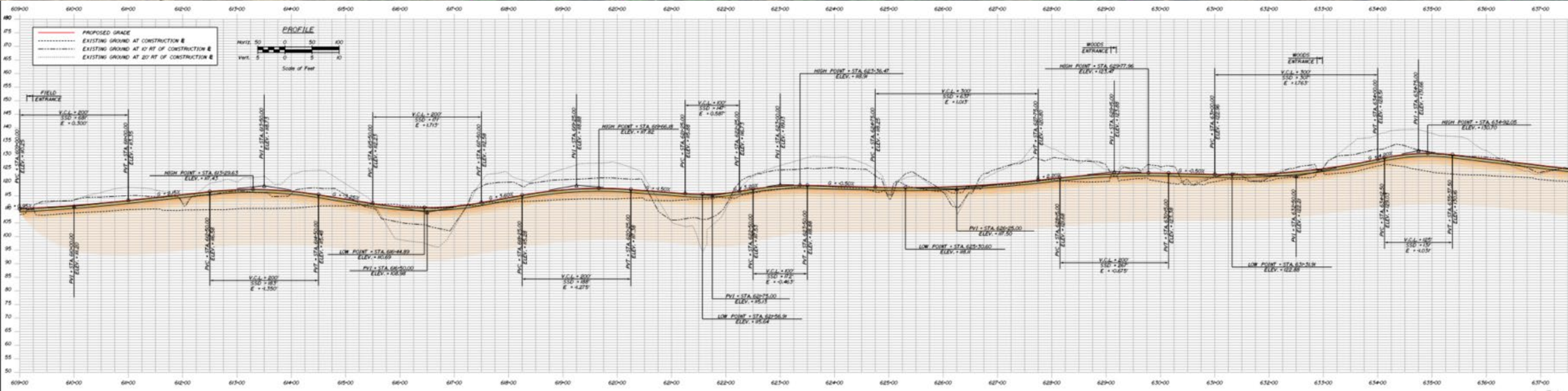
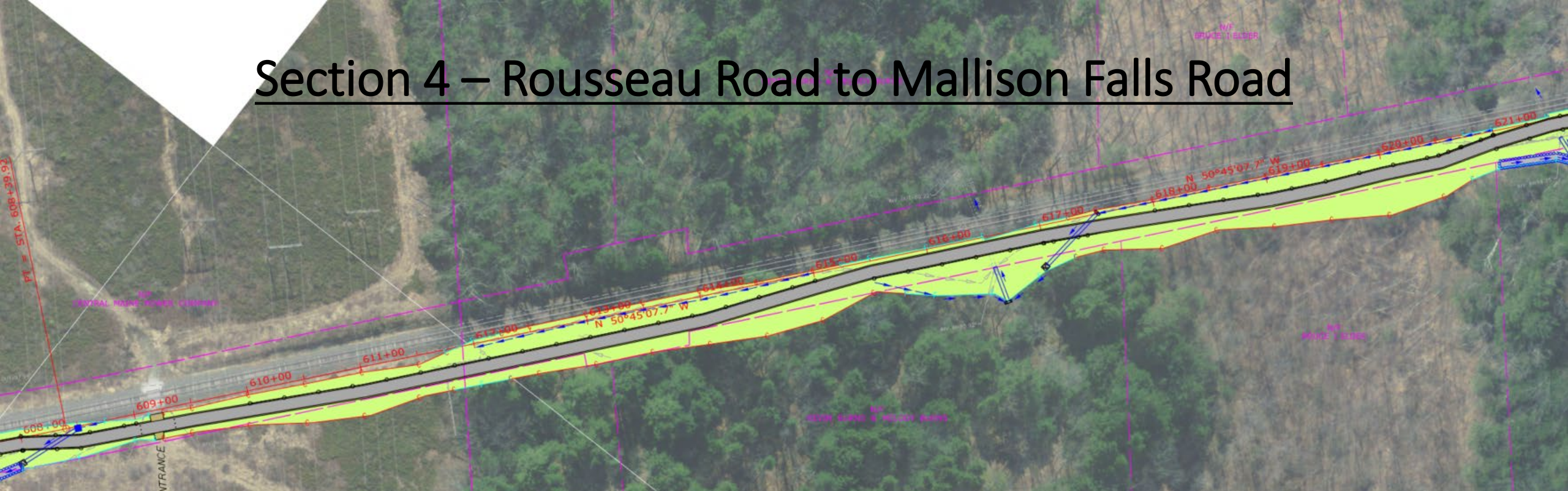




Section 4 – Rousseau Road to Mallison Falls Road

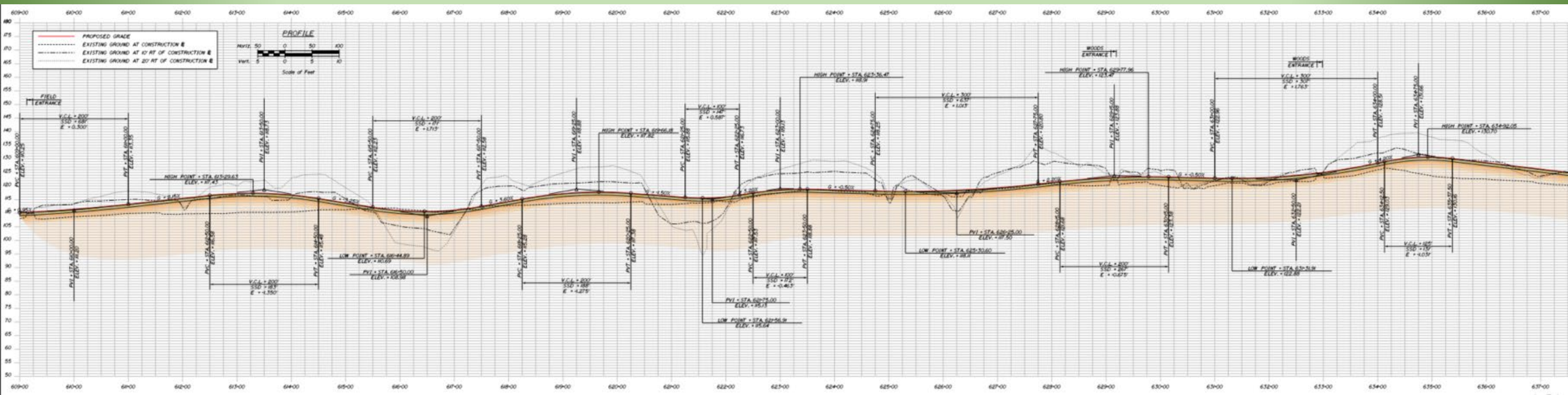


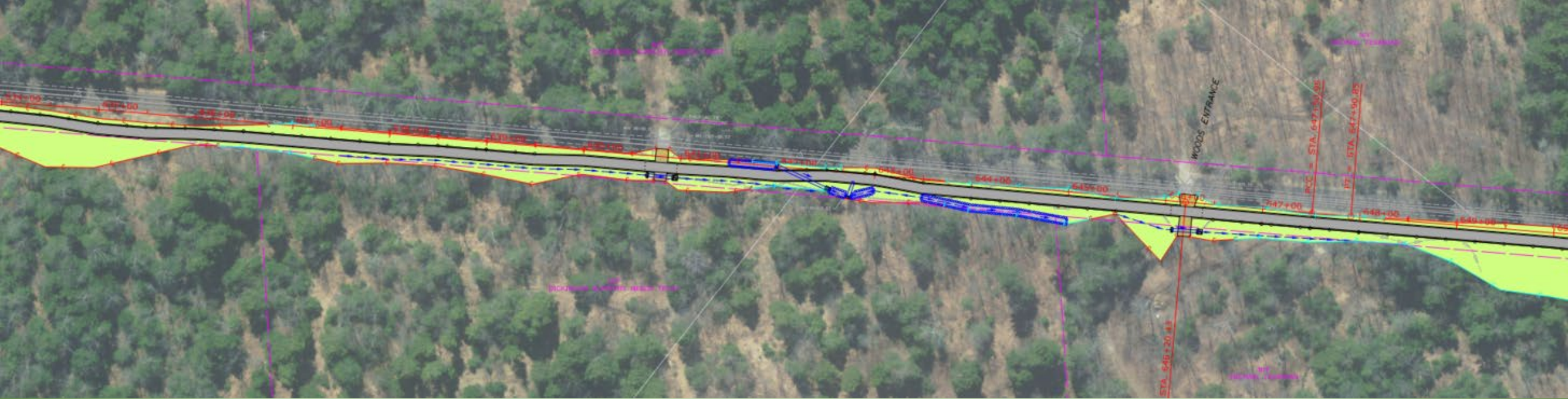
Section 4 – Rousseau Road to Mallison Falls Road



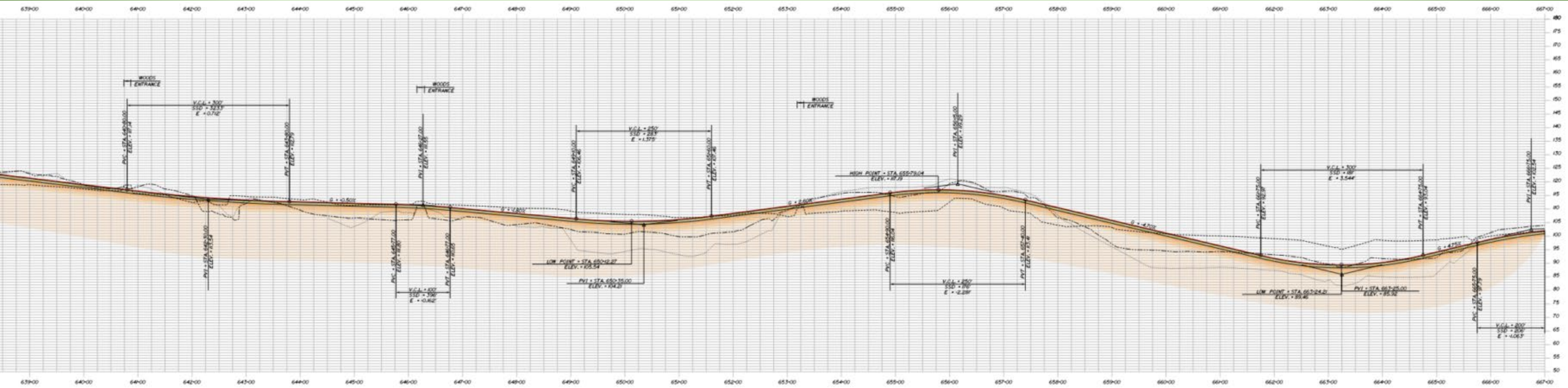


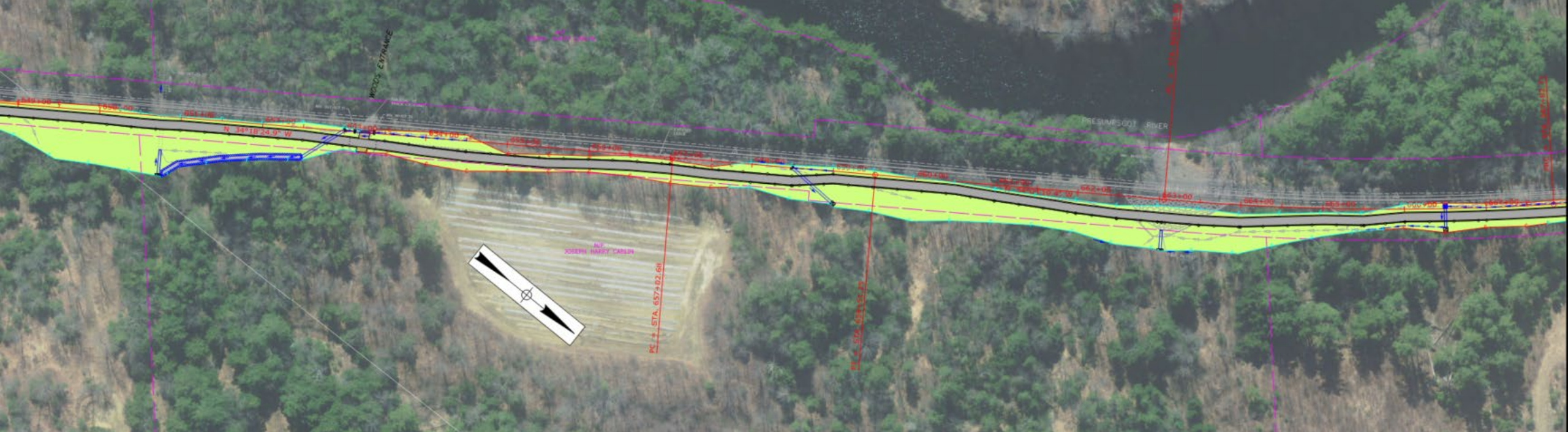
Section 4 – Rousseau Road to Mallison Falls Road



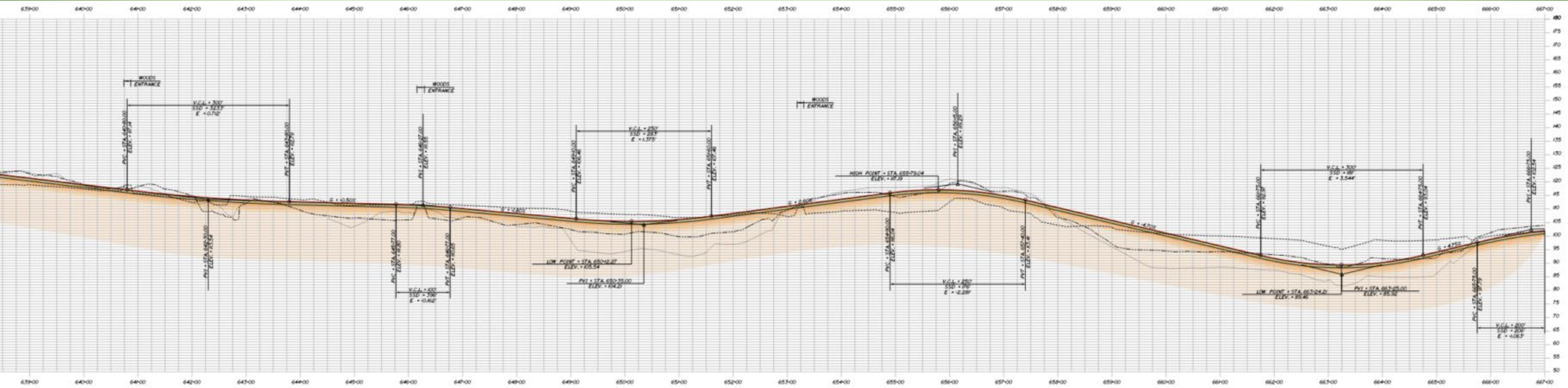


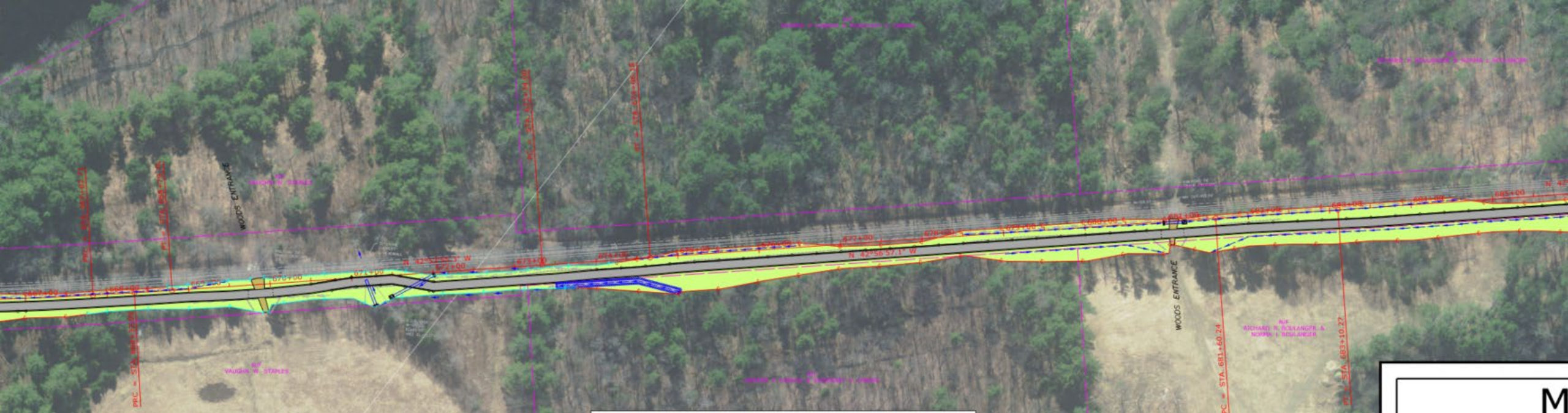
Section 4 – Rousseau Road to Mallison Falls Road



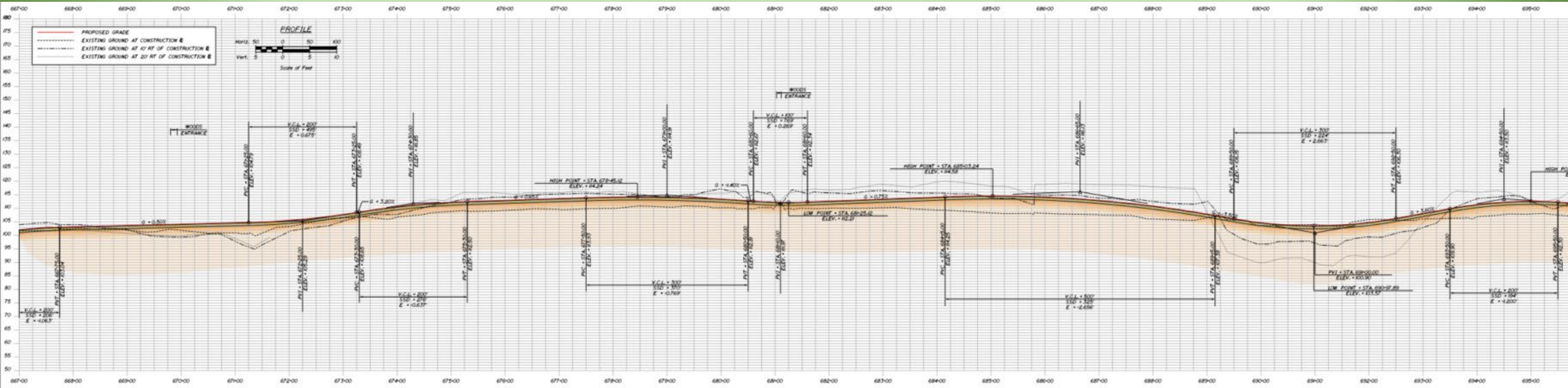


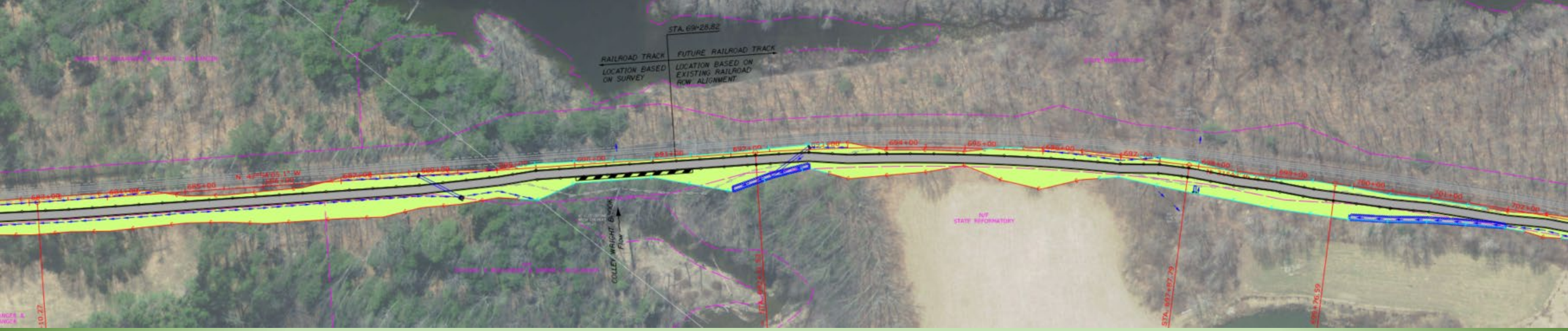
Section 4 – Rousseau Road to Mallison Falls Road



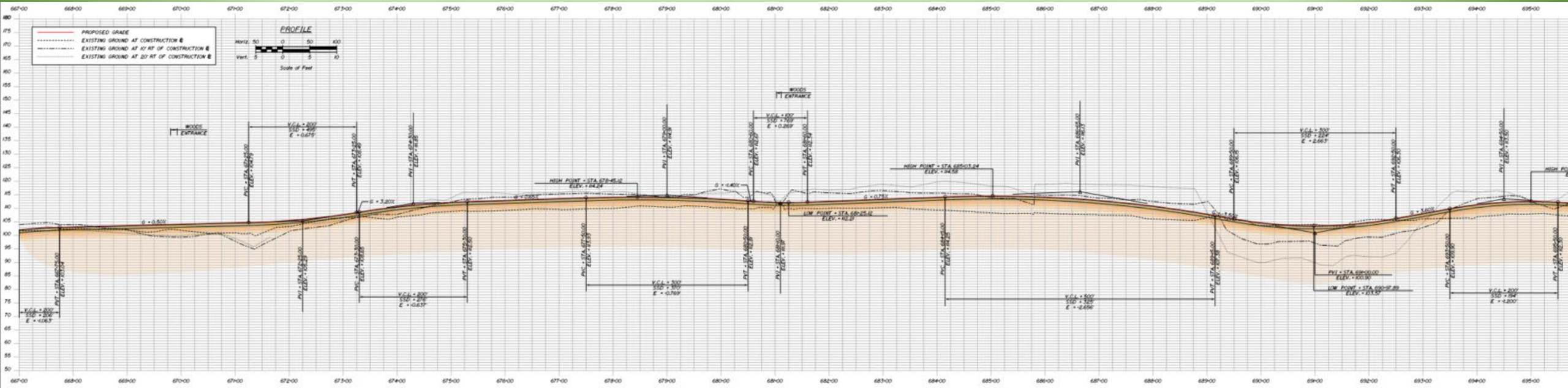


Section 4 – Rousseau Road to Mallison Falls Road



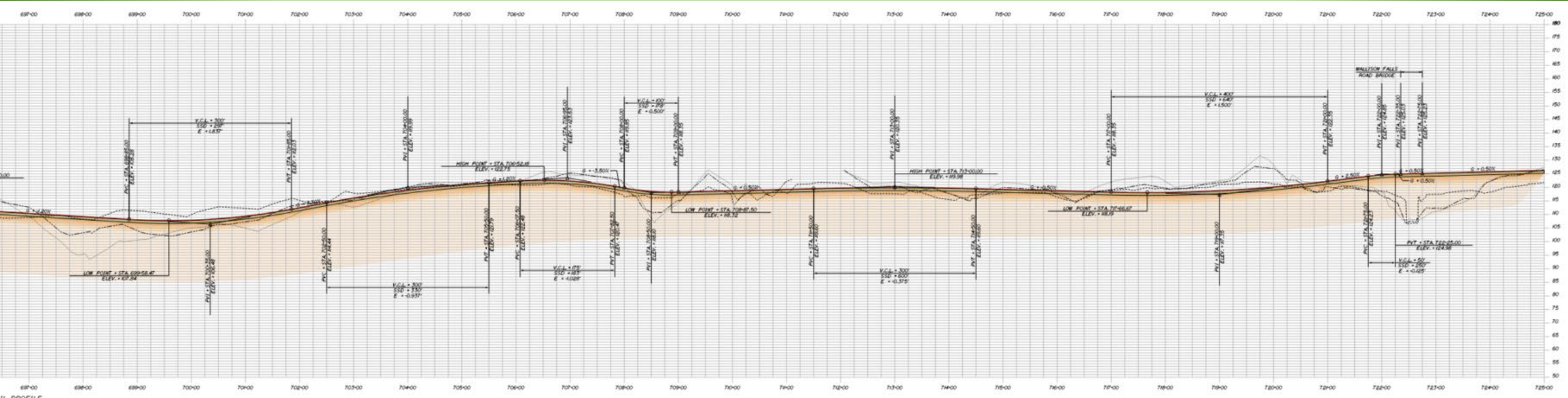


Section 4 – Rousseau Road to Mallison Falls Road

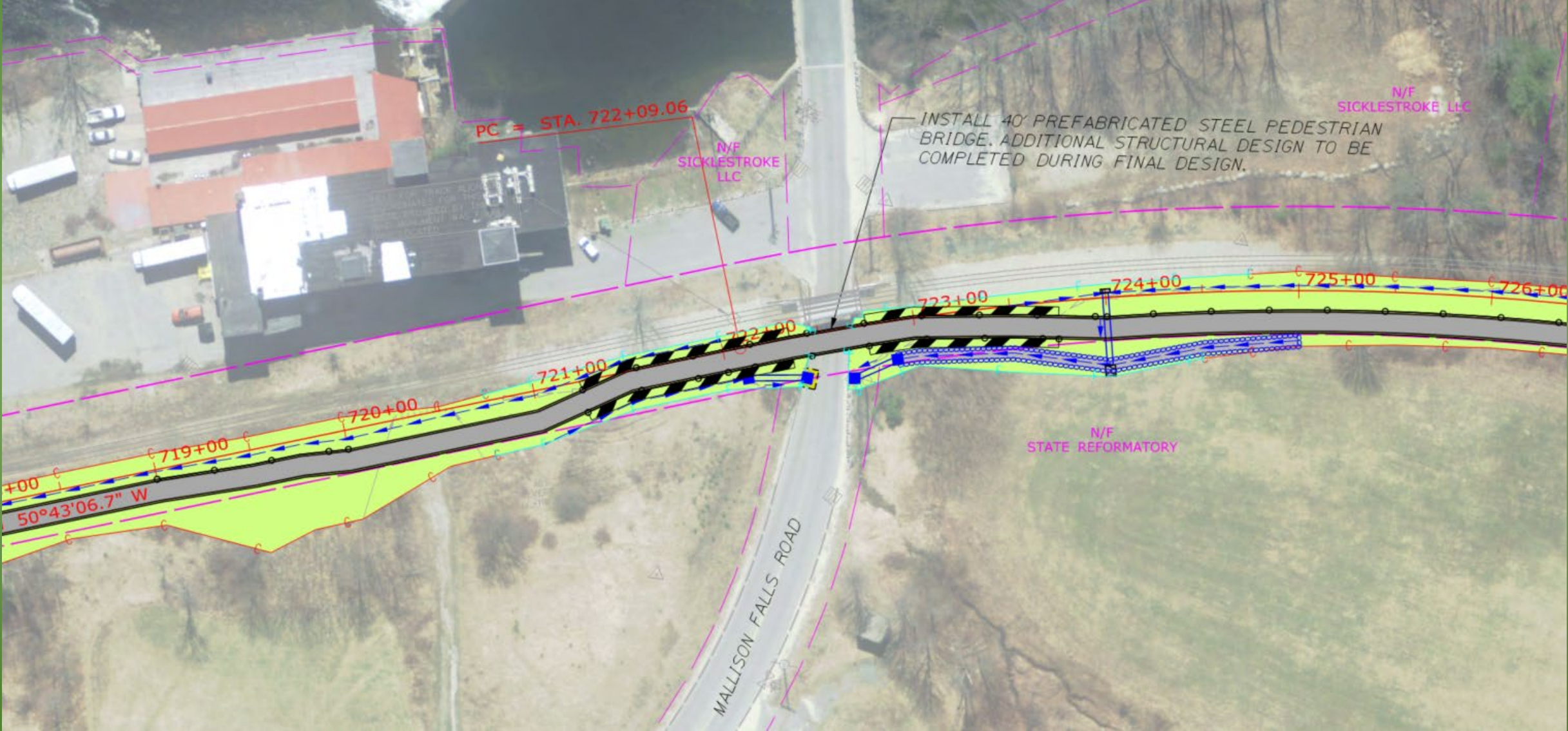




Section 4 – Rousseau Road to Mallison Falls Road

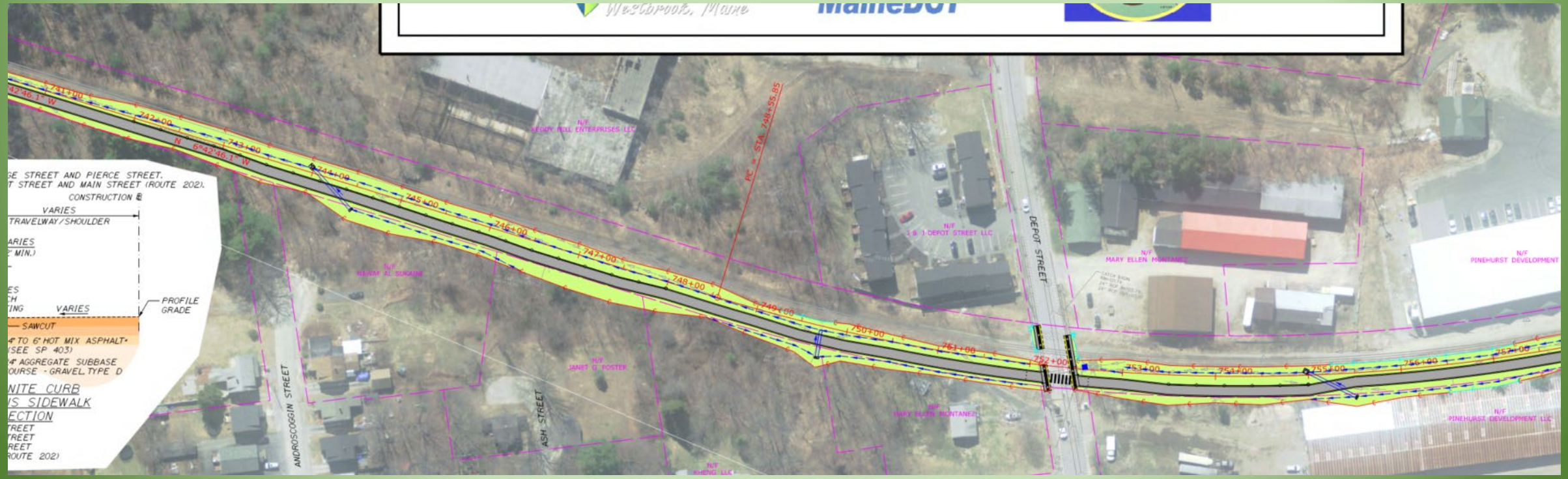


Mallison Falls Road

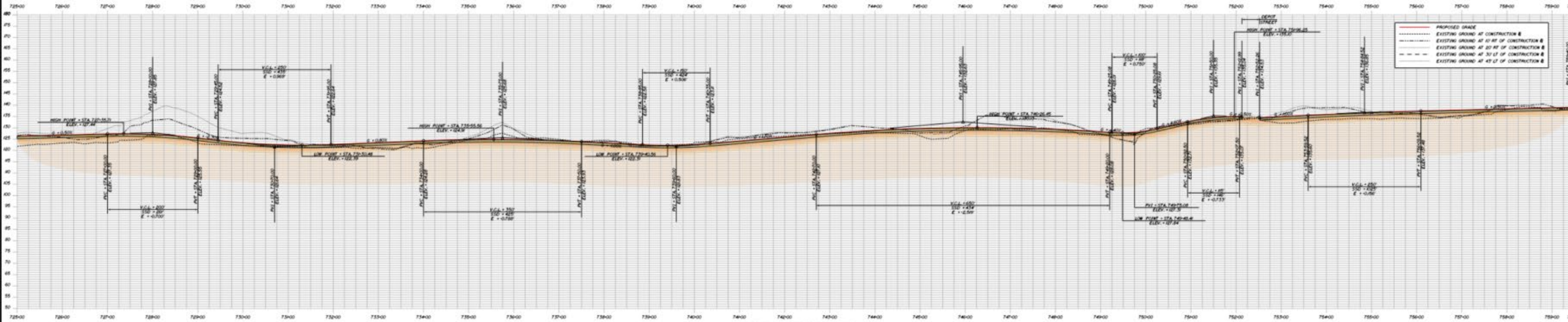




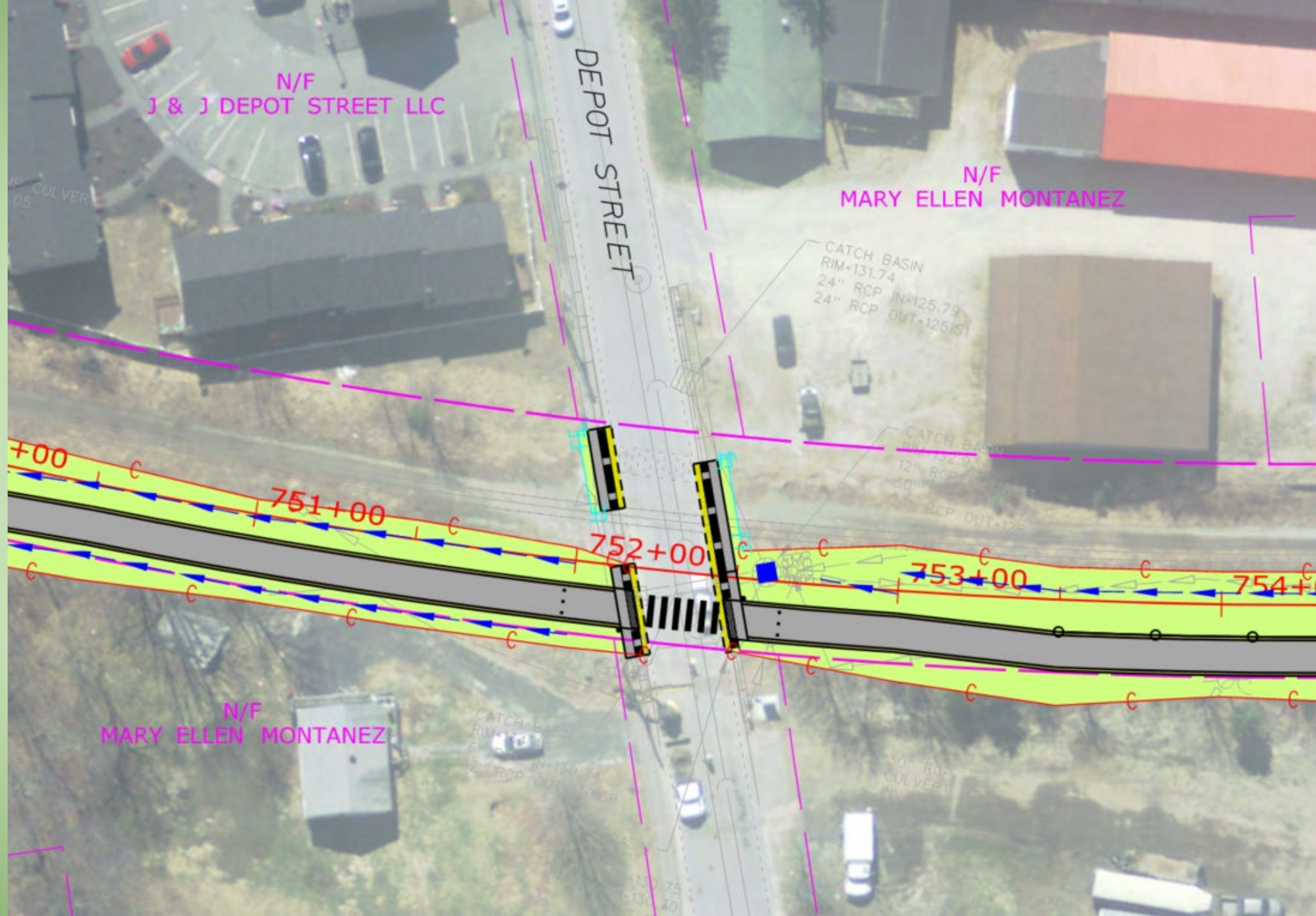
Section 5 – Mallison Falls Road to Depot Street



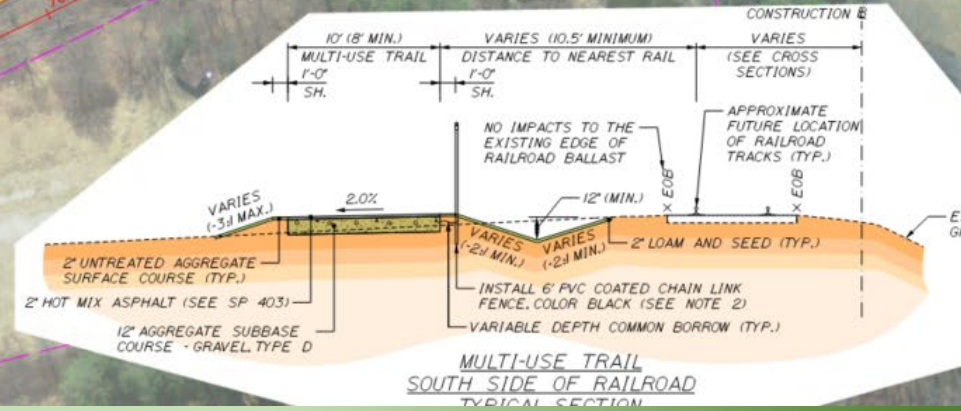
Section 5 – Mallison Falls Road to Depot Street Profile



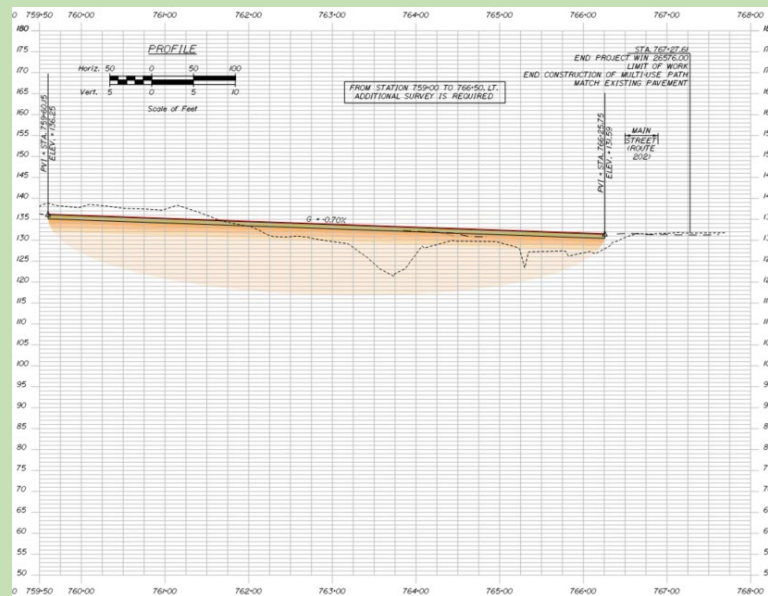
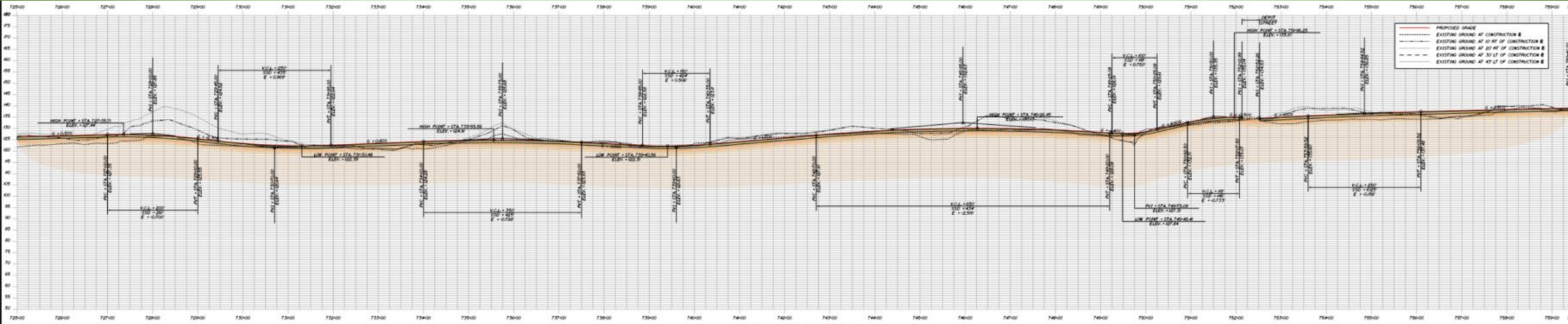
Depot Street



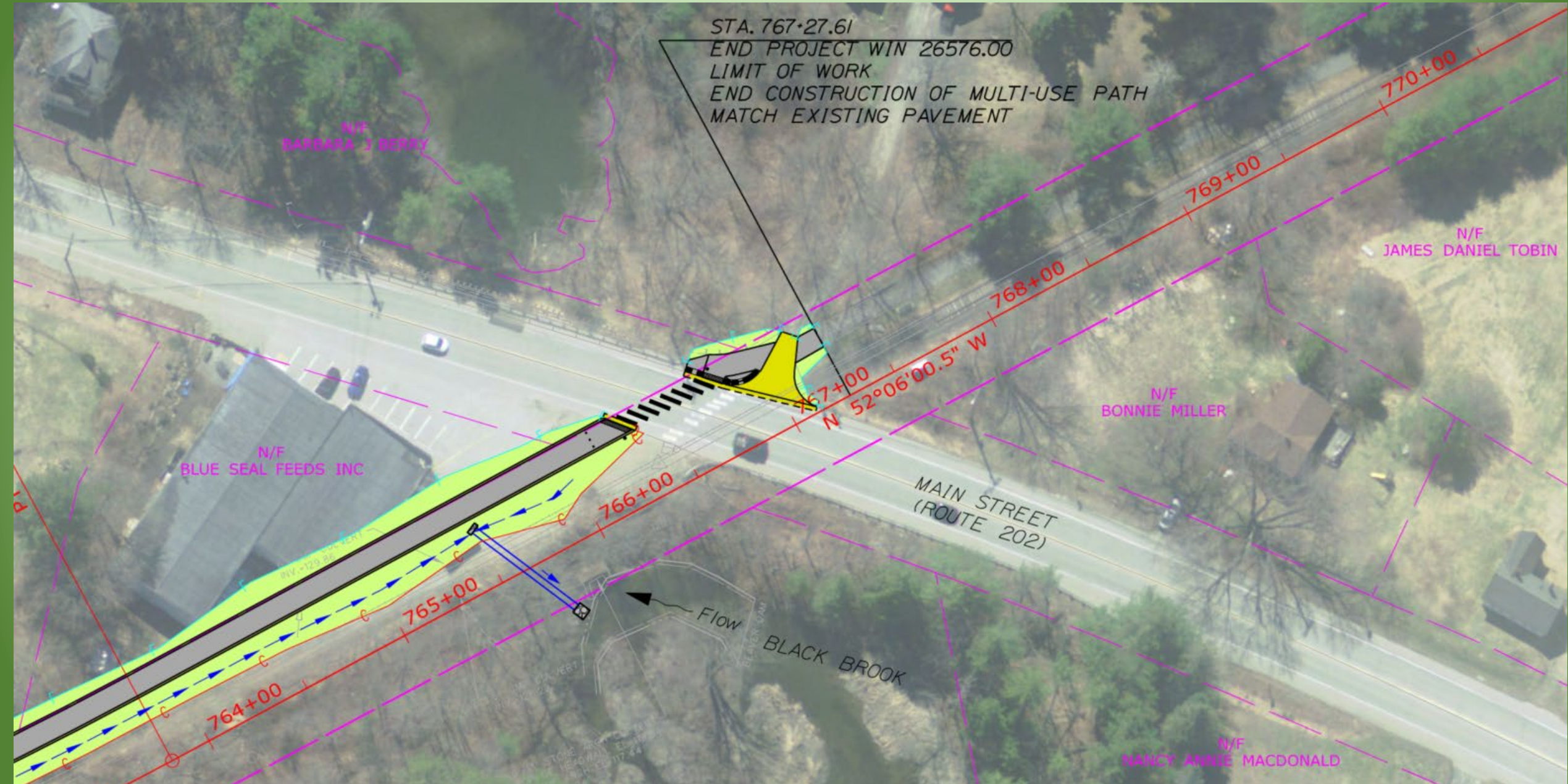
Section 6 – Depot Street to Main Street (Route 202)



Section 6 – Depot Street to Main Street (Route 202) Profile



Main Street (Route 202)





(Inkhorn Brook)

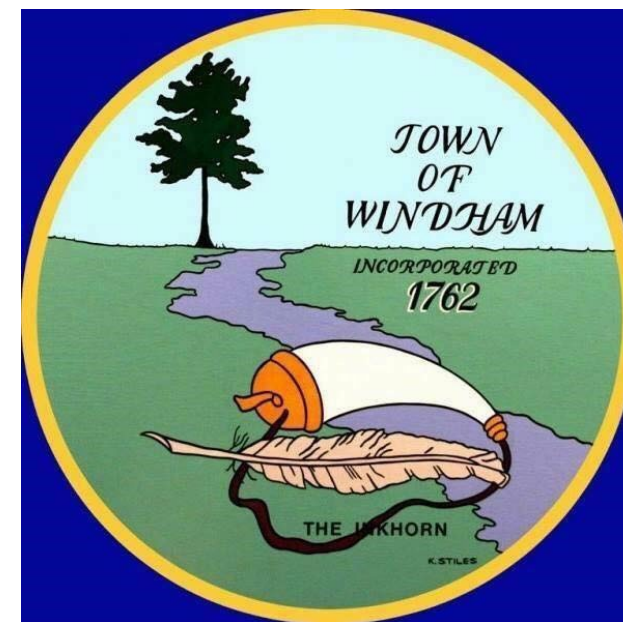


(Colley Wright Brook)

Drainage

Looking Ahead

- Utility Coordination
- Environmental Coordination
- Timeline
- Cost



A photograph of a paved path and railroad tracks in a forest. The path is on the left, and the tracks are on the right. The forest is dense with green trees. In the distance, a few people are walking on the path. The word "Questions?" is overlaid in white text in the center of the image.

Questions?